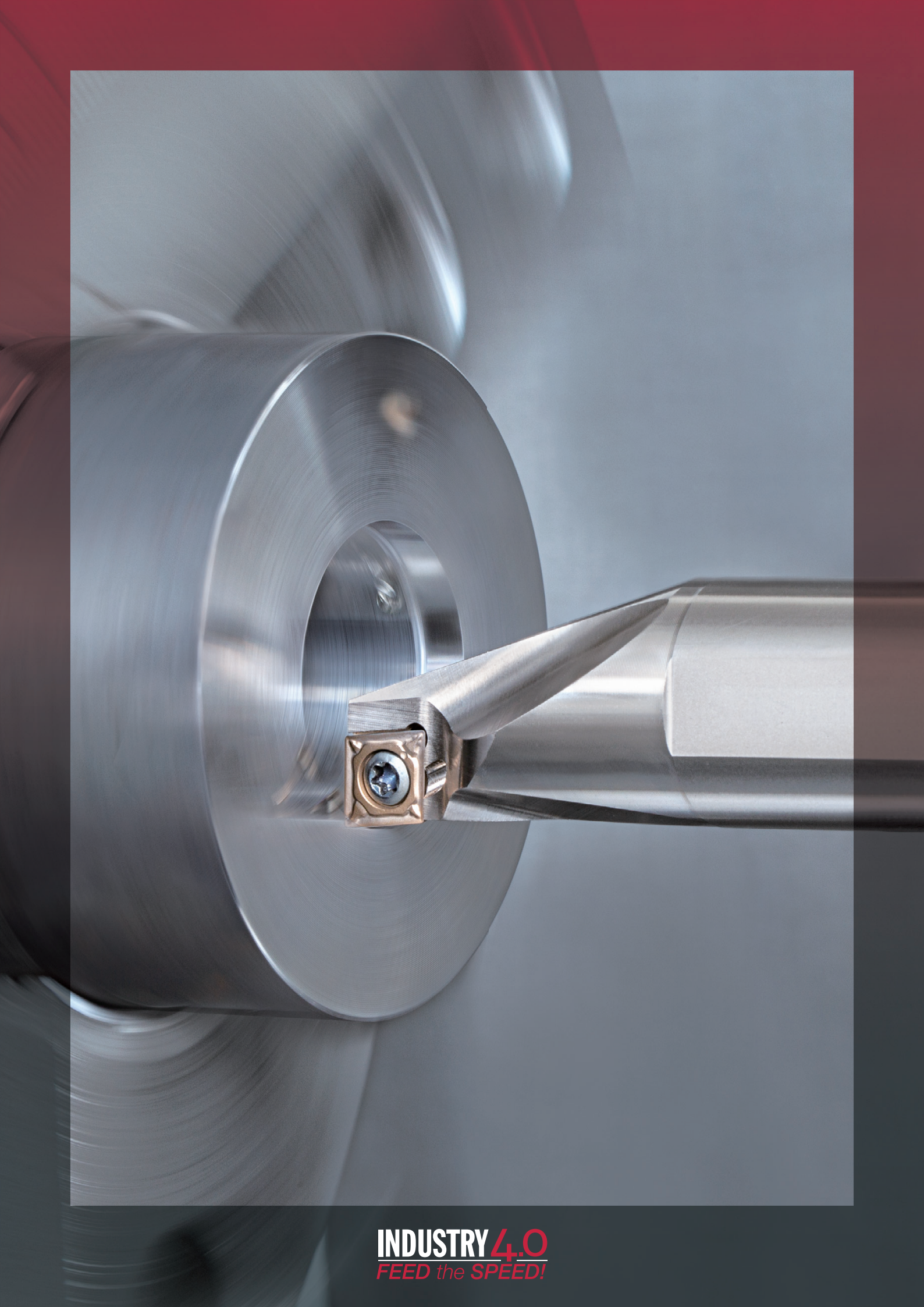


Grades for stainless steel

T6200 & AH6200

Latest grade series for stainless steel turning
with exceptional reliability

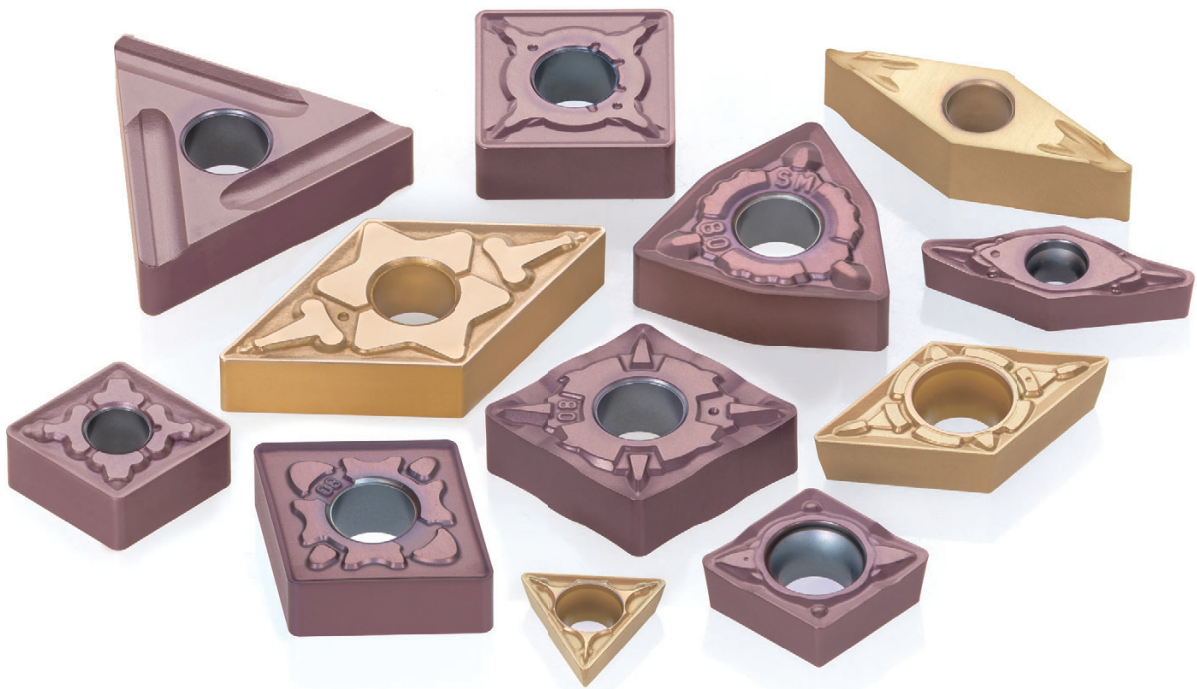




INDUSTRY 4.0
FEED the SPEED!



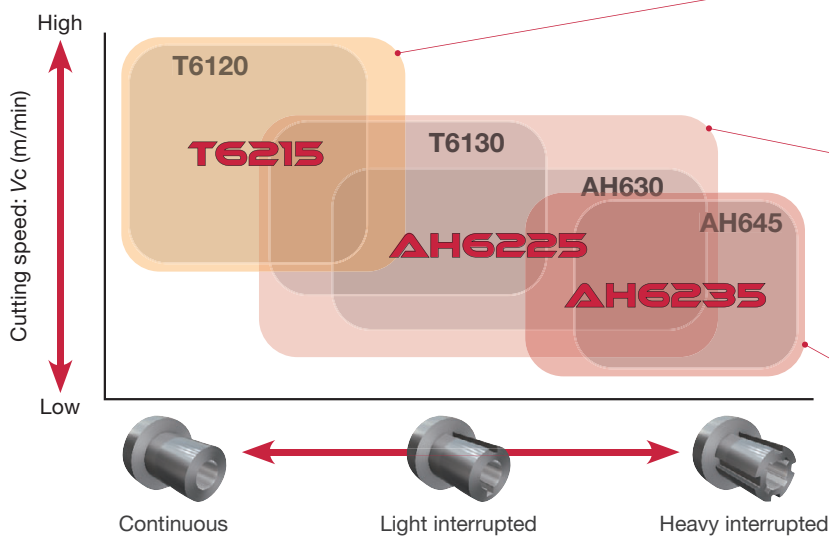
T6200 & AH6200



Latest grade series that **provide solutions for all your machining challenges in stainless steel**

T6200 & AH6200

M Stainless steel



New T6215



A CVD-coated grade suited for high speed cutting. Demonstrates superior wear resistance during continuous cutting.

AH6225



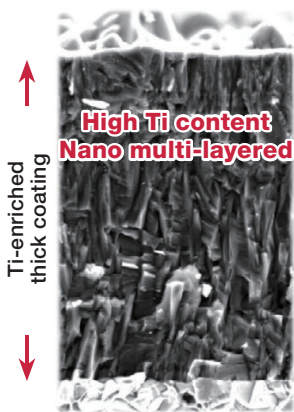
A first-choice for stainless steel. A versatile PVD grade for excellent performance in a wide range of stainless steel applications.

New AH6235



Provides high reliability during interrupted cuts or at great depths of cut.

AH6200 SERIES



Versatile PVD-coated grade

Ti-enriched coating

- Thick Ti-enriched PVD coating for enhanced thermal shock resistance.
- Reduced crater wear.

High Ti-content nano-structured multilayer coating

The outer layer consists of a high Ti-content nano-structured multilayer made possible by Tungaloy's latest coating technology. Its high hardness and nano structure provides the grade with a good balance of wear and fracture resistance, enhancing tool life and predictability.

Dedicated carbide substrate

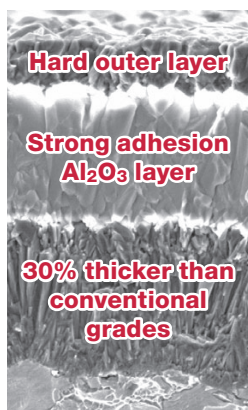
AH6225

Thanks to high thermal conductivity of the substrate, heat generated during machining is dissipated, efficiently reducing temperature on the cutting edge. This provides edge toughness, while reducing plastic deformation of the cutting edge. Ideal for continuous cuts.

AH6235

AH6235 incorporates a tough substrate that provides process security during interrupted machining. This tough substrate provides the grade with added reliability during interrupted cuts.

T6200 SERIES



T6215

Superior wear resistance

Enhanced hardness of outer layer

- Hard outer layer coating significantly reduces flank wear.

Strong adhesion of Al₂O₃ layers

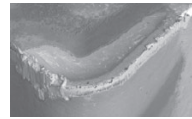
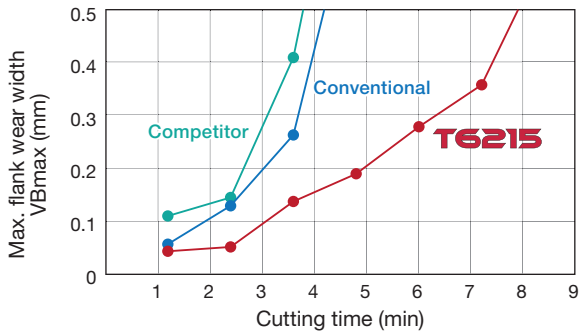
- Tungaloy's latest Al₂O₃ coating technology enhances the grade's adhesion of coating, preventing edge chipping and coating delamination.

Thick coating

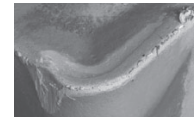
- 30% thicker than conventional grades.
- Provides superior wear resistance and long tool life.

CUTTING PERFORMANCE

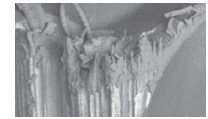
M Austenitic stainless steel SUS316L / X2CrNiMo17-12-2



T6215
7.2 min. machining



Conventional
3.6 min. machining

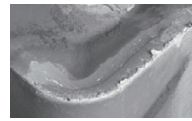
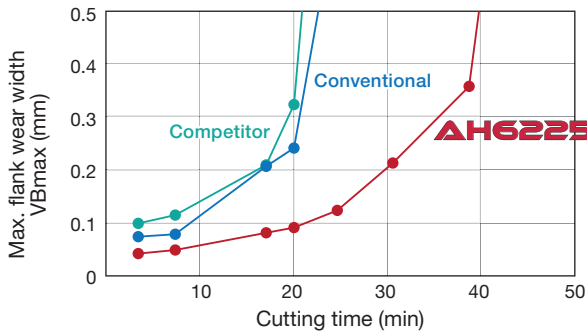


Competitor
3.6 min. machining

Insert : CNMG1204**
Cutting speed : $V_c = 240$ m/min
Feed : $f = 0.3$ mm/rev
Depth of cut : $a_p = 2$ mm
Machining : Continuous cutting
Coolant : Wet

T6215 demonstrated superior wear resistance during high speed turning of austenitic stainless steel.

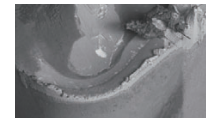
M Austenitic stainless steel SUS316L / X2CrNiMo17-12-2



AH6225
22 min. machining



Conventional
18 min. machining

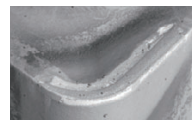
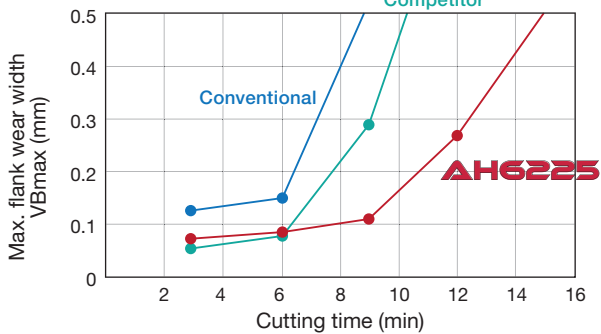


Competitor
18 min. machining

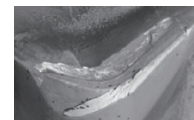
Insert : CNMG1204**
Cutting speed : $V_c = 150$ m/min
Feed : $f = 0.3$ mm/rev
Depth of cut : $a_p = 2$ mm
Machining : Continuous cutting
Coolant : Wet

AH6225 showed excellent wear resistance in austenitic stainless steel machining.

M Martensitic stainless steel SUS420J2 / X30Cr13



AH6225
9 min. machining



Conventional
9 min. machining

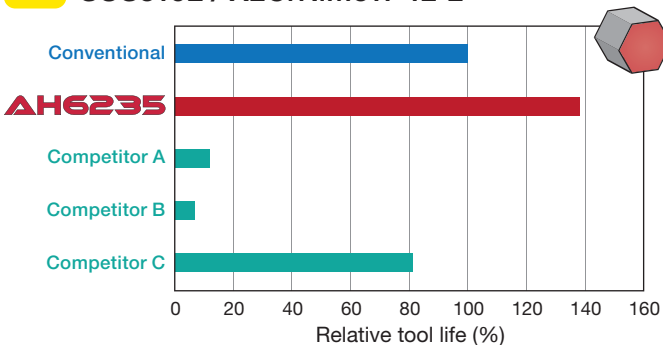


Competitor
9 min. machining

Insert : CNMG1204**
Cutting speed : $V_c = 200$ m/min
Feed : $f = 0.3$ mm/rev
Depth of cut : $a_p = 2$ mm
Machining : Continuous cutting
Coolant : Wet

AH6225 showed excellent wear resistance in martensitic stainless steel machining.

M Austenitic stainless steel SUS316L / X2CrNiMo17-12-2



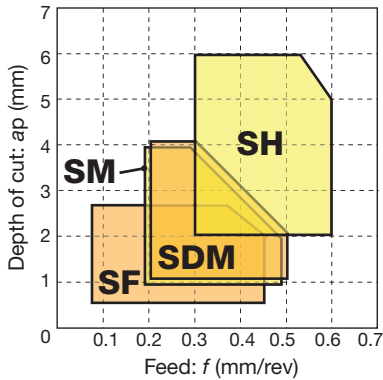
Insert : CNMG1204**
Cutting speed : $V_c = 120$ m/min
Feed : $f = 0.15$ mm/rev
Depth of cut : $a_p = 2$ mm
Machining : Heavy interrupted cutting
Coolant : Wet
Criteria : Breakage

AH6235 provided superior fracture resistance during interrupted cutting of austenitic stainless steel.

T6200 & AH6200

CHIPBREAKERS

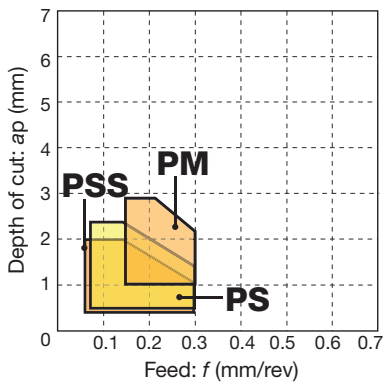
For negative inserts



Chipbreaker	Feature
SF	Demonstrates excellent chip control at high feed rates and light d.o.c. Ideal for finish machining of stainless steel.
SM	First choice for stainless steel turning. Provides light cutting action and good chip control over a wide range of cutting conditions.
New SDM	New chipbreaker that generates low cutting forces. Demonstrates excellent resistance to notch and crater wear.
SH	Strong cutting edge design with high fracture resistance for medium to heavy-duty cutting. Suited for rough machining or interrupted cuts.

ISO	Operation	Chipbreaker	Grade	Depth of cut ap (mm)	Feed f (mm/rev)	Cutting speed: Vc (m/min)		
						Austenitic stainless steel	Ferritic / martensite stainless steel	Precipitation hardened stainless steel
M	Finishing	SF	T6215	0.5 - 2.5	0.08 - 0.45	140 - 240	160 - 280	80 - 150
			AH6225	0.5 - 2.5	0.08 - 0.45	90 - 200	110 - 240	60 - 110
			AH6235	0.5 - 2.5	0.08 - 0.45	50 - 150	70 - 170	-
	Medium cutting	SM	T6215	1 - 4	0.2 - 0.5	140 - 240	160 - 280	80 - 150
			AH6225	1 - 4	0.2 - 0.5	90 - 200	110 - 240	60 - 110
			AH6235	1 - 4	0.2 - 0.5	50 - 150	70 - 170	-
		SDM	T6215	1 - 4	0.2 - 0.5	140 - 240	160 - 280	80 - 150
			AH6225	1 - 4	0.2 - 0.5	90 - 200	110 - 240	60 - 110
			AH6235	1 - 4	0.2 - 0.5	50 - 150	70 - 170	-
	Heavy cutting	SH	T6215	2 - 6	0.3 - 0.6	140 - 240	160 - 280	80 - 150
			AH6225	2 - 6	0.3 - 0.6	90 - 200	110 - 240	60 - 110
			AH6235	2 - 6	0.3 - 0.6	50 - 150	70 - 170	-

For positive inserts



Chipbreaker	Feature
PSS	Pressed-to-form 3D chipbreakers designed to provide excellent chip control and low cutting forces in finish to medium cutting.
PS	First choice for finish to medium cutting of stainless steel. Features pressed-to-form 3D chipbreakers and sharp cutting edge for excellent chip control.
PM	Chipbreaker for medium cutting with excellent chip control and process security.

ISO	Operation	Chipbreaker	Grade	Depth of cut ap (mm)	Feed f (mm/rev)	Cutting speed: Vc (m/min)		
						Austenitic stainless steel	Ferritic / martensite stainless steel	Precipitation hardened stainless steel
M	Finishing	PSS	T6215	0.3 - 2	0.08 - 0.3	140 - 240	160 - 280	80 - 150
			AH6225	0.3 - 2	0.08 - 0.3	90 - 200	110 - 240	60 - 110
			AH6235	0.3 - 2	0.08 - 0.3	50 - 150	70 - 170	-
	Finishing to medium cutting	PS	T6215	0.5 - 2.5	0.08 - 0.3	140 - 240	160 - 280	80 - 150
			AH6225	0.5 - 2.5	0.08 - 0.3	90 - 200	110 - 240	60 - 110
			AH6235	0.5 - 2.5	0.08 - 0.3	50 - 150	70 - 170	-
	Medium cutting	PM	T6215	1 - 3	0.15 - 0.3	140 - 240	160 - 280	80 - 150
			AH6225	1 - 3	0.15 - 0.3	90 - 200	110 - 240	60 - 110
			AH6235	1 - 3	0.15 - 0.3	50 - 150	70 - 170	-

Insert NEGATIVE TYPE

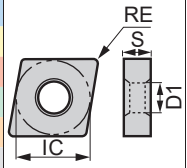
● : Continuous cutting
 ● : Light interrupted cutting
 ☆ : Heavy interrupted cutting

CN



Rhombic, 80°
with hole

P Steel	●	●	●	●	●	●	●	●	●	●	●	●	●	●	●	●	●	●	●	●	●
M Stainless	●	●	●	●	●	●	●	●	●	●	●	●	●	●	●	●	●	●	●	●	●
K Cast iron	●	●	●	●	●	●	●	●	●	●	●	●	●	●	●	●	●	●	●	●	●
N Non-ferrous	●	●	●	●	●	●	●	●	●	●	●	●	●	●	●	●	●	●	●	●	●
S Superalloy	●	●	●	●	●	●	●	●	●	●	●	●	●	●	●	●	●	●	●	●	●
H Hard material	●	●	●	●	●	●	●	●	●	●	●	●	●	●	●	●	●	●	●	●	●



Application	Chipbreaker	Designation	Coated			Dimension (mm)			
			T6215	AH6225	AH6235	RE	IC	S	D1
Finishing		SF CNMG090304-SF	★	★		0.4	9.525	3.18	3.81
		CNMG090308-SF	★	★		0.8	9.525	3.18	3.81
		CNMG120404-SF	●	●		0.4	12.7	4.76	5.16
		CNMG120408-SF	●	●		0.8	12.7	4.76	5.16
		CNMG120412-SF	●	●		1.2	12.7	4.76	5.16
Finishing		SS CNMG090404E-SS		★	★	0.4	9.525	4.76	3.81
		CNMG090408E-SS		★	★	0.8	9.525	4.76	3.81
		CNMG120404-SS	●	●	●	0.4	12.7	4.76	5.16
		CNMG120408-SS	●	●	●	0.8	12.7	4.76	5.16
		CNMG120412-SS	●	●	★	1.2	12.7	4.76	5.16
Medium cutting		TS CNMG120408-TS		★		0.8	12.7	4.76	5.16
		TM CNMG090404E-TM	★	★		0.4	9.525	4.76	3.81
		CNMG090408E-TM	★	★		0.8	9.525	4.76	3.81
		CNMG090412E-TM	★	★		1.2	9.525	4.76	3.81
		CNMG120404-TM	★	★	★	0.4	12.7	4.76	5.16
		CNMG120408-TM	★	★	★	0.8	12.7	4.76	5.16
		CNMG120412-TM	★	★	★	1.2	12.7	4.76	5.16
		CNMG120416-TM	★	★	★	1.6	12.7	4.76	5.16
		SM CNMG090404E-SM	★	★		0.4	9.525	4.76	3.81
		CNMG090408E-SM	★	★		0.8	9.525	4.76	3.81
		CNMG090412E-SM	★	★		1.2	9.525	4.76	3.81
		CNMG120404-SM	●	●	●	0.4	12.7	4.76	5.16
		CNMG120408-SM	●	●	●	0.8	12.7	4.76	5.16
CNMG120412-SM		●	●	●	1.2	12.7	4.76	5.16	
CNMG160612-SM		★	★		1.2	15.875	6.35	6.35	
CNMG160616-SM		★	★		1.6	15.875	6.35	6.35	
CNMG190612-SM		★	★		1.2	19.05	6.35	7.93	
CNMG190616-SM		★	★		1.6	19.05	6.35	7.93	

● : New product
 ★ : Will be released in 2022
 ● : Line up

T6200 & AH6200

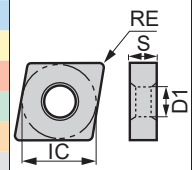
Insert NEGATIVE TYPE

- : Continuous cutting
- ◐ : Light interrupted cutting
- ★ : Heavy interrupted cutting

CN

Rhombic, 80° with hole

P Steel	●	◐	★																																											
M Stainless	●	●	◐	★																																										
K Cast iron																																														
N Non-ferrous																																														
S Superalloy																																														
H Hard material																																														



Application	Chipbreaker		Coated			Dimension (mm)			
	Designation		T6215	AH6225	AH6235	RE	IC	S	D1
Medium cutting		SDM CNMG120404-SDM	●	●	●	0.4	12.7	4.76	5.16
		CNMG120408-SDM	●	●	●	0.8	12.7	4.76	5.16
		CNMG120412-SDM	●	●	●	1.2	12.7	4.76	5.16
Medium cutting		SA CNMG120404-SA	●	●	●	0.4	12.7	4.76	5.16
		CNMG120408-SA	●	●	●	0.8	12.7	4.76	5.16
		CNMG120412-SA	●	●	●	1.2	12.7	4.76	5.16
Medium to heavy cutting		S CNMG120404R-S		●	★	0.4	12.7	4.76	5.16
		CNMG120404L-S		●	●	0.4	12.7	4.76	5.16
		CNMG120408R-S		●	★	0.8	12.7	4.76	5.16
		CNMG120408L-S		●	●	0.8	12.7	4.76	5.16
Medium to heavy cutting		TH CNMG120408-TH		★		0.8	12.7	4.76	5.16
		CNMG120412-TH		★		1.2	12.7	4.76	5.16
Medium to heavy cutting		SH CNMG120408-SH		●	●	0.8	12.7	4.76	5.16
		CNMG120412-SH		●	●	1.2	12.7	4.76	5.16
		CNMG120416-SH		●	●	1.6	12.7	4.76	5.16
		CNMG160612-SH		★	★	1.2	15.875	6.35	6.35
		CNMG160616-SH		★	★	1.6	15.875	6.35	6.35
		CNMG190612-SH		★	★	1.2	19.05	6.35	7.93
CNMG190616-SH		★	★	1.6	19.05	6.35	7.93		

- : New product
- ★ : Will be released in 2022
- ◐ : Line up

T6200 & AH6200

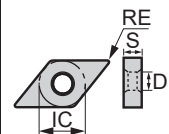
Insert **NEGATIVE TYPE**

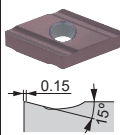
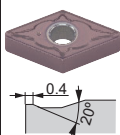
- : Continuous cutting
- : Light interrupted cutting
- ※ : Heavy interrupted cutting

DN

 Rhombic, 55°
with hole

	P	M	K	N	S	H	c	●	●●	※																		
Steel							●	●●	※																			
Stainless							●	●●	※																			
Cast iron							●	●●	※																			
Non-ferrous							●	●●	※																			
Superalloy							●	●●	※																			
Hard material							●	●●	※																			

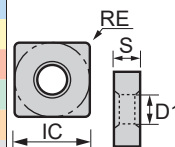



Application	Chipbreaker	Designation	Coated			Dimension (mm)			
			T6215	AH6225	AH6235	RE	IC	S	D1
Medium cutting		S DNMG150404R-S	●	●		0.4	12.7	4.76	5.16
		DNMG150404L-S	●	●		0.4	12.7	4.76	5.16
		DNMG150408R-S	●	●		0.8	12.7	4.76	5.16
		DNMG150408L-S	●	●		0.8	12.7	4.76	5.16
		DNMG150604R-S	●	●		0.4	12.7	6.35	5.16
		DNMG150604L-S	●	●		0.4	12.7	6.35	5.16
		DNMG150608R-S	●	●		0.8	12.7	6.35	5.16
		DNMG150608L-S	●	●		0.8	12.7	6.35	5.16
Medium to heavy cutting		SH DNMG150408-SH	●	●		0.8	12.7	4.76	5.16
		DNMG150412-SH	●	●		1.2	12.7	4.76	5.16
		DNMG150416-SH	●	●		1.6	12.7	4.76	5.16
		DNMG150608-SH	●	●		0.8	12.7	6.35	5.16
		DNMG150612-SH	●	●		1.2	12.7	6.35	5.16

SN

 Square, 90°
with hole

	P	M	K	N	S	H	c	●	●●	※																		
Steel							●	●●	※																			
Stainless							●	●●	※																			
Cast iron							●	●●	※																			
Non-ferrous							●	●●	※																			
Superalloy							●	●●	※																			
Hard material							●	●●	※																			



Application	Chipbreaker	Designation	Coated			Dimension (mm)			
			T6215	AH6225	AH6235	RE	IC	S	D1
Finishing		SF SNMG120404-SF	●	●		0.4	12.7	4.76	5.16
		SNMG120408-SF	●	●		0.8	12.7	4.76	5.16
		SS SNMG120404-SS	●	●	●	0.4	12.7	4.76	5.16
		SNMG120408-SS	●	●	●	0.8	12.7	4.76	5.16
		SNMG120412-SS	●	●	●	1.2	12.7	4.76	5.16

- : New product
- : Line up

T6200 & AH6200

Insert t NEGATIVE TYPE

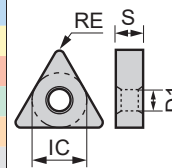
- : Continuous cutting
- ◐ : Light interrupted cutting
- ★ : Heavy interrupted cutting

TN



Triangular, 60° with hole

Material	P Steel	M Stainless	K Cast iron	N Non-ferrous	S Superalloy	H Hard material	Coated	Material Matrix															
	●	●	●	●	●	●		●	●	●	●	●	●	●	●	●	●	●	●	●	●	●	●
	●	●	●	●	●	●		●	●	●	●	●	●	●	●	●	●	●	●	●	●	●	●
	●	●	●	●	●	●		●	●	●	●	●	●	●	●	●	●	●	●	●	●	●	●
	●	●	●	●	●	●		●	●	●	●	●	●	●	●	●	●	●	●	●	●	●	●
	●	●	●	●	●	●		●	●	●	●	●	●	●	●	●	●	●	●	●	●	●	●
	●	●	●	●	●	●		●	●	●	●	●	●	●	●	●	●	●	●	●	●	●	●
	●	●	●	●	●	●		●	●	●	●	●	●	●	●	●	●	●	●	●	●	●	●
	●	●	●	●	●	●		●	●	●	●	●	●	●	●	●	●	●	●	●	●	●	●
	●	●	●	●	●	●		●	●	●	●	●	●	●	●	●	●	●	●	●	●	●	●
	●	●	●	●	●	●		●	●	●	●	●	●	●	●	●	●	●	●	●	●	●	●
	●	●	●	●	●	●		●	●	●	●	●	●	●	●	●	●	●	●	●	●	●	●
	●	●	●	●	●	●		●	●	●	●	●	●	●	●	●	●	●	●	●	●	●	●
	●	●	●	●	●	●		●	●	●	●	●	●	●	●	●	●	●	●	●	●	●	●



Application	Chipbreaker	Designation	Coated			Dimension (mm)				
			T6215	AH6225	AH6235	RE	IC	S	D1	
Finishing		TNMG160404-SF	●	●		0.4	9.525	4.76	3.81	
		TNMG160408-SF	●	●		0.8	9.525	4.76	3.81	
		TNMG160412-SF	●	●		1.2	9.525	4.76	3.81	
		TNMG110404E-SS		★	★	0.4	6.35	4.76	2.26	
		TNMG110408E-SS		★	★	0.8	6.35	4.76	2.26	
		TNMG160404-SS	●	●	●	0.4	9.525	4.76	3.81	
		TNMG160408-SS	●	●	●	0.8	9.525	4.76	3.81	
		TNMG160412-SS	●	●	★	1.2	9.525	4.76	3.81	
		TNMG220404-SS	★	★	★	0.4	12.7	4.76	5.16	
TNMG220408-SS		★	★	★	0.8	12.7	4.76	5.16		
TNMG220412-SS	★	★	★	1.2	12.7	4.76	5.16			
Medium cutting		TNMG110404E-SM		★	★	0.4	6.35	4.76	2.26	
		TNMG110408E-SM		★	★	0.8	6.35	4.76	2.26	
		TNMG160404-SM	●	●	●	0.4	9.525	4.76	3.81	
		TNMG160408-SM	●	●	●	0.8	9.525	4.76	3.81	
		TNMG160412-SM	●	●	●	1.2	9.525	4.76	3.81	
		TNMG220408-SM	★	★	★	0.8	12.7	4.76	5.16	
		TNMG220412-SM	★	★	★	1.2	12.7	4.76	5.16	
		TNMG160404-SDM	●	●	●	0.4	9.525	4.76	3.81	
		TNMG160408-SDM	●	●	●	0.8	9.525	4.76	3.81	
		TNMG160412-SDM	●	●	●	1.2	9.525	4.76	3.81	
		All-round		★		1.2	12.7	4.76	5.16	
		TNMG220412		★		1.6	12.7	4.76	5.16	
			TNMG220416		★		1.2	12.7	4.76	5.16
			TNMG160404-SA	●	●	●	0.4	9.525	4.76	3.81
			TNMG160408-SA	●	●	●	0.8	9.525	4.76	3.81
TNMG160412-SA			★	●	●	1.2	9.525	4.76	3.81	
TNMG220408-SA			★	★	★	0.8	12.7	4.76	5.16	
		TNMG220412-SA	★	★	★	1.2	12.7	4.76	5.16	
		TNMG160404R-S		●	●	0.4	9.525	4.76	3.81	
		TNMG160404L-S		●	●	0.4	9.525	4.76	3.81	
		TNMG160408R-S		●	●	0.8	9.525	4.76	3.81	
		TNMG160408L-S		●	●	0.8	9.525	4.76	3.81	
		TNMG220404R-S	★	★		0.4	12.7	4.76	5.16	
		TNMG220404L-S	★	★		0.4	12.7	4.76	5.16	
		TNMG220408R-S	★	★		0.8	12.7	4.76	5.16	
		TNMG220408L-S	★	★		0.8	12.7	4.76	5.16	
		TNMG220408L-S	★	★		0.8	12.7	4.76	5.16	

- : New product
- ★ : Will be released in 2022
- : Line up

T6200 & AH6200

Insert **NEGATIVE TYPE**

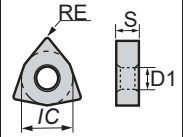
- : Continuous cutting
- ◐ : Light interrupted cutting
- ✱ : Heavy interrupted cutting

WN



Trigon, 80°
with hole

P Steel	●	●	✱																		
M Stainless	●	●	✱																		
K Cast iron																					
N Non-ferrous																					
S Superalloy																					
H Hard material																					



Application	Chipbreaker	Designation	Coated				Dimension (mm)				
			T6215	AH6225	AH6235		RE	IC	S	D1	
Finishing		SF WNMG060404-SF	✱	✱			0.4	9.525	4.76	3.81	
		WNMG060408-SF	✱	✱			0.8	9.525	4.76	3.81	
		WNMG080404-SF	●	●			0.4	12.7	4.76	5.16	
		WNMG080408-SF	●	●			0.8	12.7	4.76	5.16	
		SS WNMG060404E-SS		✱	✱			0.4	9.525	4.76	3.81
		WNMG060408E-SS		✱	✱			0.8	9.525	4.76	3.81
		WNMG060412E-SS		✱	✱			1.2	9.525	4.76	3.81
		WNMG080404-SS	●	●	●		0.4	12.7	4.76	5.16	
		WNMG080408-SS	●	●	●		0.8	12.7	4.76	5.16	
		WNMG080412-SS	✱	●	✱		1.2	12.7	4.76	5.16	
Medium cutting		TM WNMG080404-TM	✱	✱	✱		0.4	12.7	4.76	5.16	
		WNMG080408-TM	✱	✱	✱		0.8	12.7	4.76	5.16	
		WNMG080412-TM	✱	✱	✱		1.2	12.7	4.76	5.16	
		WNMG080416-TM	✱	✱	✱		1.6	12.7	4.76	5.16	
		SM WNMG060404E-SM	✱	✱			0.4	9.525	4.76	3.81	
		WNMG060408E-SM	✱	✱			0.8	9.525	4.76	3.81	
		WNMG060412E-SM	✱	✱			1.2	9.525	4.76	3.81	
		WNMG080404-SM	●	●	●		0.4	12.7	4.76	5.16	
		WNMG080408-SM	●	●	●		0.8	12.7	4.76	5.16	
		WNMG080412-SM	●	●	●		1.2	12.7	4.76	5.16	
	SDM WNMG080404-SDM	●	●	●		0.4	12.7	4.76	5.16		
	WNMG080408-SDM	●	●	●		0.8	12.7	4.76	5.16		
	WNMG080412-SDM	●	●	●		1.2	12.7	4.76	5.16		
	SA WNMG080408-SA	●	●	●		0.8	12.7	4.76	5.16		
	WNMG080412-SA	●	●	●		1.2	12.7	4.76	5.16		
	TH WNMG080408-TH		✱			0.8	12.7	4.76	5.16		

- : New product
- ✱ : Will be released in 2022
- : Line up

Insert NEGATIVE TYPE

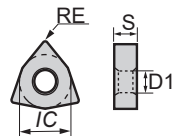
- : Continuous cutting
- ◐ : Light interrupted cutting
- ✱ : Heavy interrupted cutting

WN

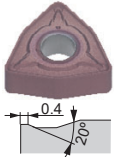


Trigon, 80° with hole

Material	Coated	1	2	3	4	5	6	7	8	9	10	11	12	13	14	15	16	17	18	19	20	21	22	23	24	25
P Steel	◐	◐	◐	◐	◐	◐	◐	◐	◐	◐	◐	◐	◐	◐	◐	◐	◐	◐	◐	◐	◐	◐	◐	◐	◐	◐
M Stainless	◐	◐	◐	◐	◐	◐	◐	◐	◐	◐	◐	◐	◐	◐	◐	◐	◐	◐	◐	◐	◐	◐	◐	◐	◐	◐
K Cast iron	◐	◐	◐	◐	◐	◐	◐	◐	◐	◐	◐	◐	◐	◐	◐	◐	◐	◐	◐	◐	◐	◐	◐	◐	◐	◐
N Non-ferrous	◐	◐	◐	◐	◐	◐	◐	◐	◐	◐	◐	◐	◐	◐	◐	◐	◐	◐	◐	◐	◐	◐	◐	◐	◐	◐
S Superalloy	◐	◐	◐	◐	◐	◐	◐	◐	◐	◐	◐	◐	◐	◐	◐	◐	◐	◐	◐	◐	◐	◐	◐	◐	◐	◐
H Hard material	◐	◐	◐	◐	◐	◐	◐	◐	◐	◐	◐	◐	◐	◐	◐	◐	◐	◐	◐	◐	◐	◐	◐	◐	◐	◐



Application	Chipbreaker	Designation	Coated			Dimension (mm)			
			T6215	AH6225	AH6235	RE	IC	S	D1
Medium to heavy cutting	SH	WNMG080408-SH	●	●		0.8	12.7	4.76	5.16
		WNMG080412-SH	●	●		1.2	12.7	4.76	5.16



- : New product
- : Line up

Insert POSITIVE TYPE

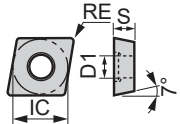
- C : Continuous cutting
- L : Light interrupted cutting
- H : Heavy interrupted cutting

CC

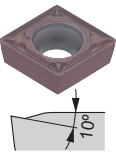


Rhombic, 80° with hole Positive 7°

Material	Coated	1	2	3	4	5	6	7	8	9	10	11	12	13	14	15	16	17	18	19	20	21	22	23	24	25
P Steel	◐	◐	◐	◐	◐	◐	◐	◐	◐	◐	◐	◐	◐	◐	◐	◐	◐	◐	◐	◐	◐	◐	◐	◐	◐	◐
M Stainless	◐	◐	◐	◐	◐	◐	◐	◐	◐	◐	◐	◐	◐	◐	◐	◐	◐	◐	◐	◐	◐	◐	◐	◐	◐	◐
K Cast iron	◐	◐	◐	◐	◐	◐	◐	◐	◐	◐	◐	◐	◐	◐	◐	◐	◐	◐	◐	◐	◐	◐	◐	◐	◐	◐
N Non-ferrous	◐	◐	◐	◐	◐	◐	◐	◐	◐	◐	◐	◐	◐	◐	◐	◐	◐	◐	◐	◐	◐	◐	◐	◐	◐	◐
S Superalloy	◐	◐	◐	◐	◐	◐	◐	◐	◐	◐	◐	◐	◐	◐	◐	◐	◐	◐	◐	◐	◐	◐	◐	◐	◐	◐
H Hard material	◐	◐	◐	◐	◐	◐	◐	◐	◐	◐	◐	◐	◐	◐	◐	◐	◐	◐	◐	◐	◐	◐	◐	◐	◐	◐



Application	Chipbreaker	Designation	Coated			Dimension (mm)			
			T6215	AH6225	AH6235	RE	IC	S	D1
Finishing	PF	CCMT060204-PF		★		0.4	6.35	2.38	2.8
	Finishing to light cutting	PSS	CCMT060204-PSS	●	●	●	0.4	6.35	2.38
		CCMT060208-PSS	★	●	★	0.8	6.35	2.38	2.8
		CCMT09T304-PSS	●	●	●	0.4	9.525	3.97	4.4
		CCMT09T308-PSS	●	●	●	0.8	9.525	3.97	4.4
		CCMT120404-PSS	★	★	★	0.4	12.7	4.76	5.5
		CCMT120408-PSS	★	★	★	0.8	12.7	4.76	5.5
		CCMT120412-PSS	★	★	★	1.2	12.7	4.76	5.5
Finishing to medium cutting		PS	CCMT060202-PS	●	●	●	0.2	6.35	2.38
		CCMT060204-PS	●	●	●	0.4	6.35	2.38	2.8
		CCMT060208-PS	●	●	●	0.8	6.35	2.38	2.8
		CCMT09T302-PS	●	●	●	0.2	9.525	3.97	4.4
		CCMT09T304-PS	●	●	●	0.4	9.525	3.97	4.4
		CCMT09T308-PS	●	●	●	0.8	9.525	3.97	4.4
		CCMT120404-PS	★	★	★	0.4	12.7	4.76	5.5
		CCMT120408-PS	★	★	★	0.8	12.7	4.76	5.5
		CCMT120412-PS	★	★	★	1.2	12.7	4.76	5.5



- : New product
- ★ : Will be released in 2022
- : Line up

T6200 & AH6200

Insert POSITIVE TYPE

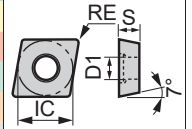
- : Continuous cutting
- ◐ : Light interrupted cutting
- ✱ : Heavy interrupted cutting

CC



**Rhombic, 80°
with hole
Positive 7°**

Material	P	M	K	N	S	H	Coated															
Steel	●	●	●	●	●	●	[Coated Options]															
Stainless	●	●	●	●	●	●	[Coated Options]															
Cast iron	●	●	●	●	●	●	[Coated Options]															
Non-ferrous	●	●	●	●	●	●	[Coated Options]															
Superalloy	●	●	●	●	●	●	[Coated Options]															
Hard material	●	●	●	●	●	●	[Coated Options]															



Application	Chipbreaker	Designation	Coated			Dimension (mm)			
			T6215	AH6225	AH6235	RE	IC	S	D1
Medium cutting		PM CCMT060204-PM	●	●	●	0.4	6.35	2.38	2.8
		CCMT060208-PM	●	●	●	0.8	6.35	2.38	2.8
		CCMT09T304-PM	●	●	●	0.4	9.525	3.97	4.4
		CCMT09T308-PM	●	●	●	0.8	9.525	3.97	4.4
		CCMT09T312-PM	✱	✱	✱	1.2	9.525	3.97	4.4
		CCMT120408-PM	✱	✱	✱	0.8	12.7	4.76	5.5
		CCMT120412-PM	✱	✱	✱	1.2	12.7	4.76	5.5
		24 CCMT060208-24		✱		0.8	6.35	2.38	2.8
		CCMT09T308-24		✱		0.8	9.525	3.97	4.4
For external turning on Swiss lathes		JS CCGT060201N-JS	●	●		0.1	6.35	2.38	2.8
		CCGT060202N-JS	●	●		0.2	6.35	2.38	2.8
		CCGT060204N-JS	●	●		0.4	6.35	2.38	2.8
		CCGT09T301N-JS	●	●		0.1	9.525	3.97	4.4
		CCGT09T302N-JS	●	●		0.2	9.525	3.97	4.4
		CCGT09T304N-JS	●	●		0.4	9.525	3.97	4.4
For external turning on Swiss lathes (sharp edge)		JS CCGT060201FN-JS	●	●		<0.1	6.35	2.38	2.8
		CCGT060202FN-JS	●	●		<0.2	6.35	2.38	2.8
		CCGT060204FN-JS	●	●		<0.4	6.35	2.38	2.8
		CCGT09T301FN-JS	●	●		<0.1	9.525	3.97	4.4
		CCGT09T302FN-JS	●	●		<0.2	9.525	3.97	4.4
		CCGT09T304FN-JS	●	●		<0.4	9.525	3.97	4.4

- : New product
- ✱ : Will be released in 2022
- : Line up

T6200 & AH6200

Insert POSITIVE TYPE

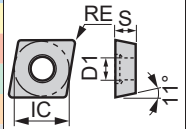
- : Continuous cutting
- ◐ : Light interrupted cutting
- ⊛ : Heavy interrupted cutting

CP



Rhombic, 80°
with hole
Positive 11°

	P	M	K	N	S	H																				
Steel	●	●	●	●	●	●	●	●	●	●	●	●	●	●	●	●	●	●	●	●	●	●	●	●	●	●
Stainless	●	●	●	●	●	●	●	●	●	●	●	●	●	●	●	●	●	●	●	●	●	●	●	●	●	●
Cast iron	●	●	●	●	●	●	●	●	●	●	●	●	●	●	●	●	●	●	●	●	●	●	●	●	●	●
Non-ferrous	●	●	●	●	●	●	●	●	●	●	●	●	●	●	●	●	●	●	●	●	●	●	●	●	●	●
Superalloy	●	●	●	●	●	●	●	●	●	●	●	●	●	●	●	●	●	●	●	●	●	●	●	●	●	●
Hard material	●	●	●	●	●	●	●	●	●	●	●	●	●	●	●	●	●	●	●	●	●	●	●	●	●	●



Application	Chipbreaker	Designation	Coated			Dimension (mm)			
			T6215	AH6225	AH6235	RE	IC	S	D1
Finishing to light cutting		PSS CPMT080204-PSS	★	★	★	0.4	7.94	2.38	3.4
		CPMT080208-PSS	★	★	★	0.8	7.94	2.38	3.4
		CPMT090304-PSS	●	●	●	0.4	9.525	3.18	4.4
		CPMT090308-PSS	●	●	★	0.8	9.525	3.18	4.4
Finishing to medium cutting		PS CPMT080202-PS	★	★	★	0.2	7.94	2.38	3.4
		CPMT080204-PS	★	★	★	0.4	7.94	2.38	3.4
		CPMT080208-PS	★	★	★	0.8	7.94	2.38	3.4
		CPMT090304-PS	●	●	●	0.4	9.525	3.18	4.4
		CPMT090308-PS	●	●	●	0.8	9.525	3.18	4.4
Medium cutting		PM CPMT060204-PM	★	★	★	0.4	6.35	2.38	2.8
		CPMT060208-PM	★	★	★	0.8	6.35	2.38	2.8
		CPMT090304-PM	●	●	●	0.4	9.525	3.18	4.4
		CPMT090308-PM	●	●	●	0.8	9.525	3.18	4.4

- : New product
- ★ : Will be released in 2022
- : Line up

Insert POSITIVE TYPE

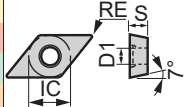
- : Continuous cutting
- : Light interrupted cutting
- ⚡ : Heavy interrupted cutting

DC

Rhombic, 55°
with hole
Positive 7°



Material	Coated	1	2	3	4	5	6	7	8	9	10	11	12	13	14	15	16	17	18	19	20	21	22	23	24	25	26	27	28	29	30	31	32
P Steel	● ●●																																
M Stainless	● ●●																																
K Cast iron																																	
N Non-ferrous																																	
S Superalloy																																	
H Hard material																																	



Application	Chipbreaker	Designation	Coated		T6215	AH6225	Dimension (mm)			
							RE	IC	S	D1
For external turning on Swiss lathes (sharp edge)	JS	DCGT070201FN-JS	●	●			<0.1	6.35	2.38	2.8
		DCGT070202FN-JS	●	●			<0.2	6.35	2.38	2.8
		DCGT11T301FN-JS	●	●			<0.1	9.525	3.97	4.4
		DCGT11T302FN-JS	●	●			<0.2	9.525	3.97	4.4
		DCGT11T304FN-JS	●	●			<0.4	9.525	3.97	4.4
	For external turning on Swiss lathes	JS	DCGT070201N-JS	●	●			0.1	6.35	2.38
		DCGT070202N-JS	●	●			0.2	6.35	2.38	2.8
		DCGT11T301N-JS	●	●			0.1	9.525	3.97	4.4
		DCGT11T302N-JS	●	●			0.2	9.525	3.97	4.4
		DCGT11T304N-JS	●	●			0.4	9.525	3.97	4.4

- : New product
- ★ : Will be released in 2022
- : Line up

Insert POSITIVE TYPE

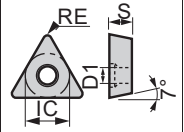
- : Continuous cutting
- ◐ : Light interrupted cutting
- ⊛ : Heavy interrupted cutting

TC



Triangular, 60°
with hole
Positive 7°

Material	Coated	Application															
P Steel	● ⊛ ⊛	[Application Grid]															
M Stainless	● ● ⊛	[Application Grid]															
K Cast iron	● ● ⊛	[Application Grid]															
N Non-ferrous	● ● ⊛	[Application Grid]															
S Superalloy	● ● ⊛	[Application Grid]															
H Hard material	● ● ⊛	[Application Grid]															



Application	Chipbreaker	Designation	Coated			Dimension (mm)			
			T6215	AH6225	AH6235	RE	IC	S	D1
Finishing to medium cutting		PS TCMT110202-PS	★	★	★	0.2	6.35	2.38	2.8
		TCMT110204-PS	●	●	●	0.4	6.35	2.38	2.8
		TCMT110208-PS	●	●	★	0.8	6.35	2.38	2.8
		TCMT110302-PS	★	★	★	0.2	6.35	3.18	2.8
		TCMT110304-PS	★	★	★	0.4	6.35	3.18	2.8
		TCMT110308-PS	★	★	★	0.8	6.35	3.18	2.8
		TCMT16T302-PS	★	★	★	0.2	9.525	3.97	4.4
		TCMT16T304-PS	●	●	●	0.4	9.525	3.97	4.4
		TCMT16T308-PS	●	●	●	0.8	9.525	3.97	4.4
Medium cutting		PM TCMT110202-PM	★	★	★	0.2	6.35	2.38	2.8
		TCMT110204-PM	●	●	●	0.4	6.35	2.38	2.8
		TCMT110208-PM	●	●	★	0.8	6.35	2.38	2.8
		TCMT110302-PM	★	★	★	0.2	6.35	3.18	2.8
		TCMT110304-PM	★	★	★	0.4	6.35	3.18	2.8
		TCMT110308-PM	★	★	★	0.8	6.35	3.18	2.8
		TCMT16T304-PM	●	●	●	0.4	9.525	3.97	4.4
		TCMT16T308-PM	●	●	●	0.8	9.525	3.97	4.4
		TCMT16T312-PM	★	★	★	1.2	9.525	3.97	4.4

- : New product
- ★ : Will be released in 2022
- : Line up

T6200 & AH6200

Insert POSITIVE TYPE

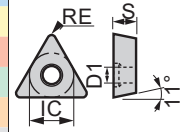
- : Continuous cutting
- ◐ : Light interrupted cutting
- ✱ : Heavy interrupted cutting

TP



Triangular, 60°
with hole
Positive 11°

P	Steel	●	◐	✱																																						
M	Stainless	●	◐	✱																																						
K	Cast iron	●	◐	✱																																						
N	Non-ferrous	●	◐	✱																																						
S	Superalloy	●	◐	✱																																						
H	Hard material	●	◐	✱																																						



Application	Chipbreaker	Designation	Coated			Dimension (mm)					
			T6215	AH6225	AH6235	RE	IC	S	D1		
Finishing to light cutting		PSS TPMT090204-PSS	●	●	★			0.4	5.56	2.38	2.5
		TPMT090208-PSS	★	●	★			0.8	5.56	2.38	2.5
		TPMT110204-PSS	●	●	●			0.4	6.35	2.38	2.8
		TPMT110208-PSS	★	★	★			0.8	6.35	2.38	2.8
		TPMT110304-PSS	●	●	●			0.4	6.35	3.18	3.4
		TPMT110308-PSS	★	★	★			0.8	6.35	3.18	3.4
		TPMT130304-PSS	●	●	●			0.4	7.94	3.18	3.4
		TPMT130308-PSS	★	●	★			0.8	7.94	3.18	3.4
		TPMT16T304-PSS	●	●	●			0.4	9.525	3.97	4.4
		TPMT16T308-PSS	●	●	★			0.8	9.525	3.97	4.4
Finishing to medium cutting		PS TPMT090202-PS	●	●	●			0.2	5.56	2.38	2.5
		TPMT090204-PS	●	●	●			0.4	5.56	2.38	2.5
		TPMT090208-PS	●	●	●			0.8	5.56	2.38	2.5
		TPMT110202-PS	★	★	★			0.2	6.35	2.38	2.8
		TPMT110204-PS	●	●	●			0.4	6.35	2.38	2.8
		TPMT110208-PS	★	★	★			0.8	6.35	2.38	2.8
		TPMT110304-PS	●	●	●			0.4	6.35	3.18	3.4
		TPMT110308-PS	★	★	★			0.8	6.35	3.18	3.4
		TPMT130304-PS	●	●	●			0.4	7.94	3.18	3.4
		TPMT130308-PS	●	●	●			0.8	7.94	3.18	3.4
		TPMT16T304-PS	●	●	●			0.4	9.525	3.97	4.4
		TPMT16T308-PS	●	●	●			0.8	9.525	3.97	4.4
Medium cutting		PM TPMT090204-PM	●	●	●			0.4	5.56	2.38	2.5
		TPMT090208-PM	★	●	★			0.8	5.56	2.38	2.5
		TPMT110204-PM	●	●	●			0.4	6.35	2.38	2.8
		TPMT110208-PM	★	★	★			0.8	6.35	2.38	2.8
		TPMT110304-PM	●	●	●			0.4	6.35	3.18	3.4
		TPMT110308-PM	★	★	★			0.8	6.35	3.18	3.4
		TPMT130304-PM	●	●	●			0.4	7.94	3.18	3.4
		TPMT130308-PM	●	●	●			0.8	7.94	3.18	3.4
		TPMT16T304-PM	●	●	●			0.4	9.525	3.97	4.4
		TPMT16T308-PM	●	●	●			0.8	9.525	3.97	4.4
		TPMT16T312-PM	★	★	★			1.2	9.525	3.97	4.4

- : New product
- ★ : Will be released in 2022
- : Line up

- : Continuous cutting
- ◐ : Light interrupted cutting
- ✱ : Heavy interrupted cutting

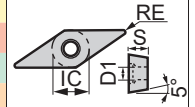
Insert POSITIVE TYPE

VB

**Rhombic, 35°
with hole
Positive 5°**



P	Steel	●	●	●	✱
M	Stainless	●	●	●	✱
K	Cast iron	●	●	●	✱
N	Non-ferrous	●	●	●	✱
S	Superalloy	●	●	●	✱
H	Hard material	●	●	●	✱



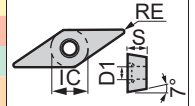
Application	Chipbreaker		Coated		Dimension (mm)					
			T6215	AH6225	AH6235	RE	IC	S	D1	
			●	●	●					
Finishing to light cutting		PSS	VBMT110304-PSS	●	●	●	0.4	6.35	3.18	2.8
		VBMT110308-PSS	●	●	●	0.8	6.35	3.18	2.8	
		VBMT160404-PSS	●	●	●	0.4	9.525	4.76	4.4	
		VBMT160408-PSS	●	●	●	0.8	9.525	4.76	4.4	
		PS	VBMT110302-PS	★	★	★	0.2	6.35	3.18	2.8
Finishing to medium cutting		VBMT110304-PS	●	●	●	0.4	6.35	3.18	2.8	
		VBMT110308-PS	●	●	●	0.8	6.35	3.18	2.8	
		VBMT160402-PS	★	★	★	0.2	9.525	4.76	4.4	
		VBMT160404-PS	●	●	●	0.4	9.525	4.76	4.4	
		VBMT160408-PS	●	●	●	0.8	9.525	4.76	4.4	

VC

**Rhombic, 35°
with hole
Positive 7°**



P	Steel	●	●	●	✱
M	Stainless	●	●	●	✱
K	Cast iron	●	●	●	✱
N	Non-ferrous	●	●	●	✱
S	Superalloy	●	●	●	✱
H	Hard material	●	●	●	✱


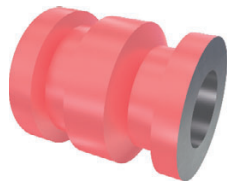
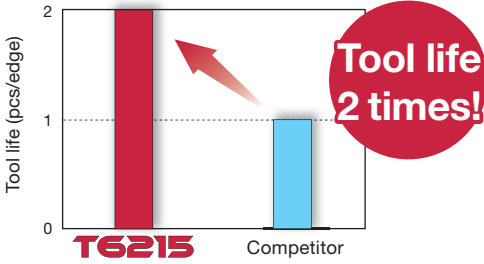
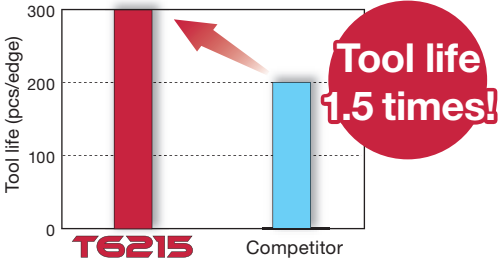
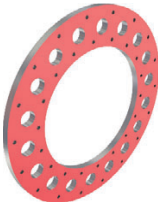

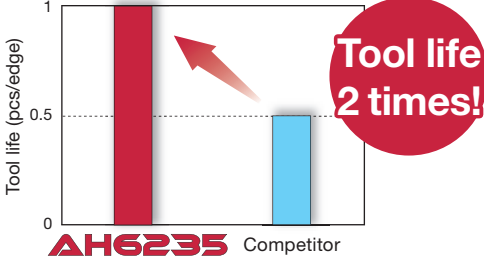
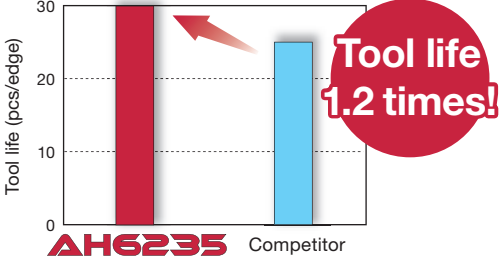


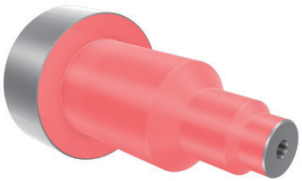
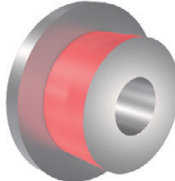
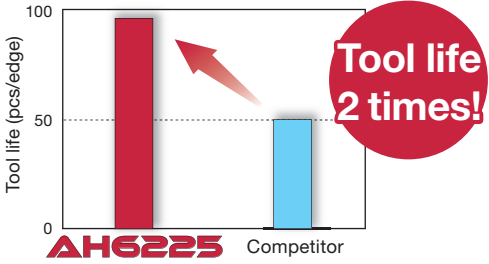
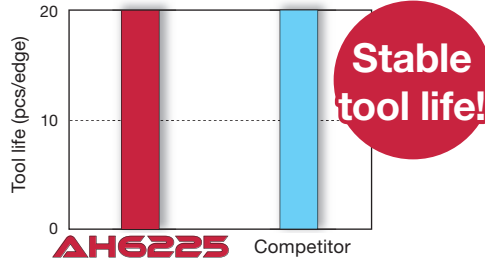
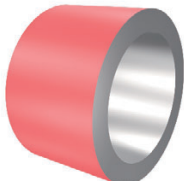
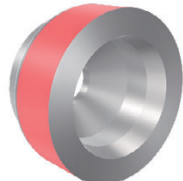
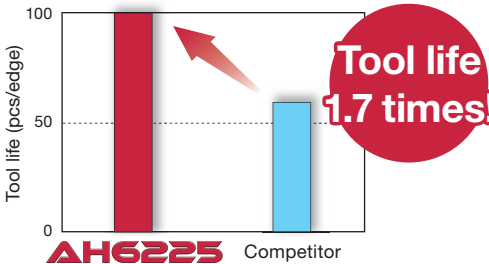
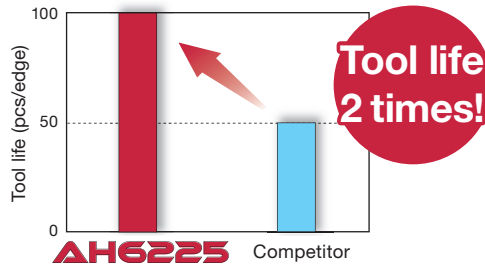
Application	Chipbreaker		Coated		Dimension (mm)					
			T6215	AH6225	AH6235	RE	IC	S	D1	
			●	●	●					
Finishing to light cutting		PSS	VCMT110304-PSS	●	●	●	0.4	6.35	3.18	2.8
		VCMT110308-PSS	★	●	●	0.8	6.35	3.18	2.8	
		VCMT160404-PSS	●	●	●	0.4	9.525	4.76	4.4	
		VCMT160408-PSS	●	●	●	0.8	9.525	4.76	4.4	
		PS	VCMT110302-PS	★	★	★	0.2	6.35	3.18	2.8
Finishing to medium cutting		VCMT110304-PS	●	●	●	0.4	6.35	3.18	2.8	
		VCMT110308-PS	★	●	★	0.8	6.35	3.18	2.8	
		VCMT160404-PS	●	●	●	0.4	9.525	4.76	4.4	
		VCMT160408-PS	●	●	●	0.8	9.525	4.76	4.4	

- : New product
- ★ : Will be released in 2022
- : Line up

T6200 & AH6200

PRACTICAL EXAMPLES

Workpiece type		Pipe part	Machine part
Insert		DNMG150408-SM	TNMG160408-SM
Grade		T6215	T6215
Workpiece material		SUS304 / X5CrNi18-9	SUS304 / X5CrNi18-9
		 M	 M
Cutting conditions	Cutting speed: V_c (m/min)	150	200
	Feed : f (mm/rev)	0.3	0.3
	Depth of cut : a_p (mm)	3	2.5
	Machining	External turning	External face turning
	Coolant	Wet	Wet
Results		 <p>T6215 provided double tool life and successfully minimized notch wear, which was a major challenge with the competitor's grade.</p>	 <p>T6215 provided 1.5 times tool life and eliminated plastic deformation. The grade also improved surface finish, providing process security.</p>
Workpiece type		Generator part	Machine part
Insert		CNMG120408-SH	CNMG120412-SM
Grade		AH6235	AH6235
Workpiece material		SUS410 / X12Cr13	SUS304 / X5CrNi18-9
		 M	 M
Cutting conditions	Cutting speed: V_c (m/min)	70	80
	Feed : f (mm/rev)	0.15	0.2
	Depth of cut : a_p (mm)	2 - 4	1.5
	Machining	Face turning (interrupted cutting)	Face turning (interrupted cutting)
	Coolant	Wet	Wet
Results		 <p>AH6235 provided double tool life and process security, eliminating insert failure during interrupted cuts.</p>	 <p>AH6235 provided 1.2 times tool life and substantially reduced edge chipping and fracture.</p>

Workpiece type		Joint part	Ball valve part
Insert		CNMG120404-SM	CNMG120408-SM
Grade		AH6225	AH6225
Workpiece material		SUS304 / X5CrNi18-9	SUS304 / X5CrNi18-9
		 M	 M
Cutting conditions	Cutting speed: V_c (m/min)	90	150
	Feed : f (mm/rev)	0.2	0.2
	Depth of cut : a_p (mm)	1	1.5
	Machining	External turning	External turning
	Coolant	Wet	Wet
Results		 <p>AH6225 Competitor</p> <p>AH6225 doubled tool life and significantly reduced premature insert failure, helping the customer gain productivity.</p>	 <p>AH6225 Competitor</p> <p>AH6225 eliminated tool life unpredictability such as premature insert failures, while satisfying the tool life requirement of 20 pcs per edge.</p>
Workpiece type		Coupling part	Machine part
Insert		TNMG160408-SM	VNMG160404-SF
Grade		AH6225	AH6225
Workpiece material		Super duplex stainless steel	SUS440 (Martensite stainless steel)
		 M	 M
Cutting conditions	Cutting speed: V_c (m/min)	150	110
	Feed : f (mm/rev)	0.25	0.1
	Depth of cut : a_p (mm)	1	0.5
	Machining	External turning	External turning
	Coolant	Wet	Wet
Results		 <p>AH6225 Competitor</p> <p>AH6225 significantly reduced notch wear, while increasing tool life to 100 pcs per edge surpassing the required tool life of 60 pcs per edge.</p>	 <p>AH6225 Competitor</p> <p>AH6225 doubled tool life, allowing the customer to gain productivity.</p>

Tungaloy Corporation (Head office)

11-1 Yoshima-Kogyodanchi
Iwaki-city, Fukushima 970-1144 Japan
Phone: +81-246-36-8501
Fax: +81-246-36-8542
www.tungaloy.co.jp

Tungaloy America, Inc.

3726 N Ventura Drive
Arlington Heights, IL 60004, U.S.A.
Phone: +1-888-554-8394
Fax: +1-888-554-8392
www.tungaloy.com/us

Tungaloy Canada

432 Elgin St. Unit 3
Brantford, Ontario N3S 7P7, Canada
Phone: +1-519-758-5779
Fax: +1-519-758-5791
www.tungaloy.com/ca

Tungaloy de Mexico S.A.

C. Los Arellano 113,
Parque Industrial Siglo XXI
Aguascalientes, AGS, Mexico 20290
Phone: +52-449-929-5410
Fax: +52-449-929-5411
www.tungaloy.com/mx

Tungaloy do Brasil Ltda.

Avd. Independencia N4158 Residencial Flora
13280-000 Vinhedo, São Paulo, Brasil
Phone: +55-19-38262757
Fax: +55-19-38262757
www.tungaloy.com/br

Tungaloy Germany GmbH

An der Alten Ziegelei 1
D-40789 Monheim, Germany
Phone: +49-2173-90420-0
Fax: +49-2173-90420-19
www.tungaloy.com/de

Tungaloy France S.A.S.

ZA Courtaboëuf - Le Rio
1 rue de la Terre de feu
F-91952 Courtaboëuf Cedex, France
Phone: +33-1-6486-4300
Fax: +33-1-6907-7817
www.tungaloy.com/fr

Tungaloy Italia S.r.l.

Via E. Andolfato 10
I-20126 Milano, Italy
Phone: +39-02-252012-1
Fax: +39-02-252012-65
www.tungaloy.com/it

Tungaloy Czech s.r.o.

Turanka 115
CZ-627 00 Brno, Czech Republic
Phone: +420-532 123 391
Fax: +420-532 123 392
www.tungaloy.com/cz

Tungaloy Ibérica S.L.

C/Miquel Servet, 43B, Nau 7
Pol. Ind. Bufalvent
ES-08243 Manresa (BCN), Spain
Phone: +34 93 113 1360
Fax: +34 93 876 2798
www.tungaloy.com/es

Tungaloy Scandinavia AB

Bultgatan 38
442 40 Kungälv, Sweden
Phone: +46-462119200
Fax: +46-462119207
www.tungaloy.com/se

Tungaloy Rus, LLC

Andropova avenue, h.18/7,
11 floor, office 3, 115432,
Moscow, Russia
Phone: +7-499-683-01-80
Fax: +7-499-683-01-81
www.tungaloy.com/ru

Tungaloy Polska Sp. z o.o.

Ul. Irysowa 1, 55-040 Bielany
Wrocławskie, Poland
Phone: +48 607 907 237
www.tungaloy.com/pl

Tungaloy U.K. Ltd

Gallan Park, Watling Street,
Cannock, WS110XG, UK
Phone: +44 121 4000 231
Fax: +44 121 270 9694
www.tungaloy.com/uk

Tungaloy Hungary Kft

Erzsébet királyné útja 125
H-1142 Budapest, Hungary
Phone: +36 1 781-6846
Fax: +36 1 781-6866
www.tungaloy.com/hu

Tungaloy Turkey

Serifali Mah.bayraktar Bulvari Kule Sk. No:26
34775 Umraniye / Istanbul / Turkey
Phone: +90 216 540 04 67
Fax: +90 216 540 04 87
www.tungaloy.com/tr

Tungaloy Benelux b.v.

Tjalk 70
NL-2411 NZ Bodegraven, Netherlands
Phone: +31 172 630 420
Fax: +31 172 630 429
www.tungaloy.com/nl

Tungaloy Croatia

Ulica bana Josipa Jelačića 87,
10430, Samobor, Croatia
Phone: +385 1 3326 604
Fax: +385 1 3327 683
www.tungaloy.com/hr

Tungaloy Cutting Tool (Shanghai) Co.,Ltd.

Rm No 401 No.88 Zhabei
Jiangchang No.3 Rd
Shanghai 200436, China
Phone: +86-21-3632-1880
Fax: +86-21-3621-1918
www.tungaloy.com/cn

Tungaloy Cutting Tools (Taiwan) Co.,Ltd.

9F. No.293, Zhongyang Rd,
Xinzhuang Dist, New Taipei City,
24251 Taiwan
Phone: +886-2-8521-9986
Fax: +886-2-8521-8935
www.tungaloy.com/tw

Tungaloy Cutting Tools (Thailand) Co.,Ltd.

Interlink tower 4th Fl.
1858/5-7 Bangna-Trad Road
km.5 Bangna, Bangna, Bangkok 10260
Thailand
Phone: +66-2-751-5711
Fax: +66-2-751-5715
www.tungaloy.com/th

Tungaloy Singapore (Pte.), Ltd.

62 Ubi Road 1, #06-11 Oxley BizHub 2
Singapore 408734
Phone: +65-6391-1833
Fax: +65-6299-4557
www.tungaloy.com/sing

Tungaloy Vietnam

LE04.38, Lexington Residence
67 Mai Chi Tho St., Dist. 2,
Ho Chi Minh City, Vietnam
Phone: +84-2837406660
www.tungaloy.com/sing

Tungaloy India Pvt. Ltd.

One International Center,
Unit # 902-A, 9th Floor,
Tower 1, Senapati Bapat Marg,
Elphinstone Road (West),
Mumbai -400013, India
Phone: +91-22-6124-8804
Fax: +91-22-6124-8899
www.tungaloy.com/in

Tungaloy Korea Co., Ltd

#1312, Byucksan Digital Valley 5-cha
Beotkkot-ro 244, Geumcheon-gu
153-788 Seoul, Korea
Phone: +82-2-2621-6161
Fax: +82-2-6393-8952
www.tungaloy.com/kr

Tungaloy Malaysia Sdn Bhd

50 K-2, Kelana Mall, Jalan SS6/14
Kelana Jaya, 47301
Petaling Jaya, Selangor Darul Ehsan
Malaysia
Phone: +603-7805-3222
Fax: +603-7804-8563
www.tungaloy.com/my

Tungaloy Australia Pty Ltd

Unit 68 1470 Ferntree Gully Road
Knoxfield 3180 Victoria, Australia
Phone: +61-3-9755-8147
Fax: +61-3-9755-6070
www.tungaloy.com/au

PT. Tungaloy Indonesia

Kompleks Grand Wisata Block AA-10 No.3-5
Cibitung
Bekasi 17510, Indonesia
Phone: +62-21-8261-5808
Fax: +62-21-8261-5809
www.tungaloy.com/id



www.tungaloy.com

follow us at:

facebook.com/tungaloyjapan

twitter.com/tungaloyjapan

www.youtube.com/tungaloycorporation

Distributed by:



 FIND US ON THE CLOUD!
machingcloud.com



AS9100 Certified
78006
2015.11.04
ISO14001 Certified
EC97J1123
1997.11.26

Produced from Recycled paper

Nov. 2021 (TJ)