

TINY^{INI}MTURN

Tungaloy Report No. 402S1-G

New innovative sleeve with 4 coolant holes





New sleeve offers high chip evacuation and stable tool life with 4 coolant holes

New concept sleeve

- 4 coolant holes offers super high chip evacuation
- No chip jamming, No machine downtime
- Stable and longer tool life
- Effective for various applications
internal turning, grooving, threading etc.



Super high chip evacuation

Internal coolant sleeve

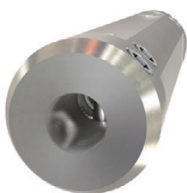


Excellent chip evacuation!



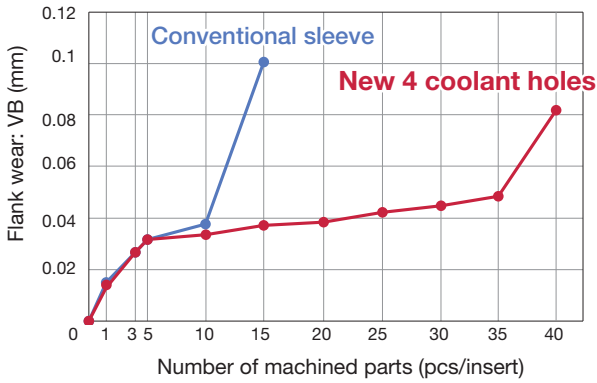
- No jamming
- Smoothly start the next part

Conventional sleeve (External coolant)



- Chips are jamming
- Need to stop machine

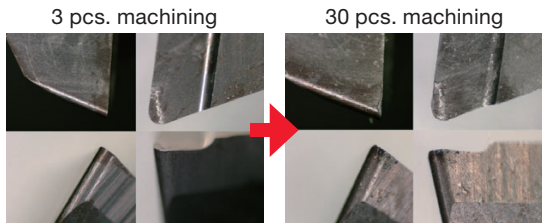
Stable tool life



M

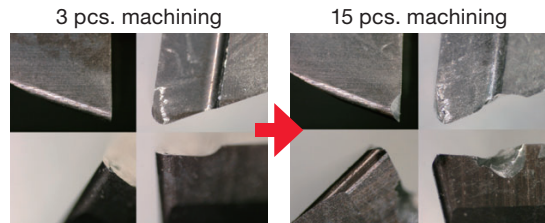
Sleeve : **NEW** JBBS19-7-L100C-4N (4 holes internal coolant)
 Conventional JBBS19-4-7 (External coolant)
 Solid bar : JBTR07210015-D060 SH730
 Workpiece material : SUS316L
 Cutting speed : $V_c = 60$ m/min
 Feed : $f = 0.02$ mm/rev
 Depth of cut : $a_p = 0.5$ mm
 Coolant : Wet

New JBBS19-7-L100C-4N



Stable tool life

Conventional JBBS19-4-7



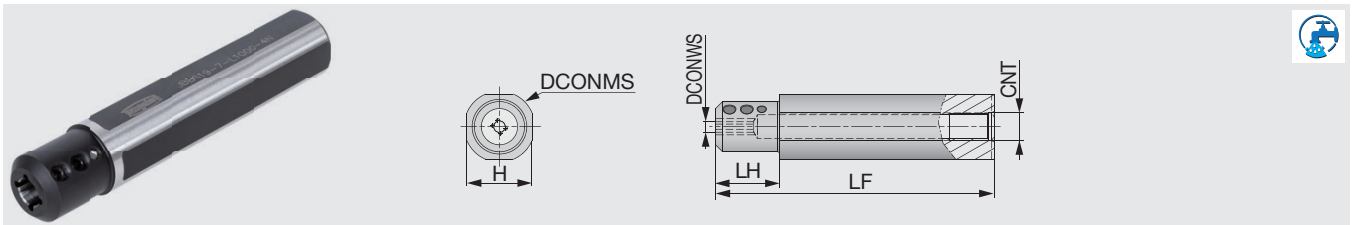
Sudden fracture by chip jamming

4 coolant holes prevent chip jamming and sudden fracture by super high chip evacuation

New

JBBS-4N

Sleeve for internal coolant supply with 4 coolant holes



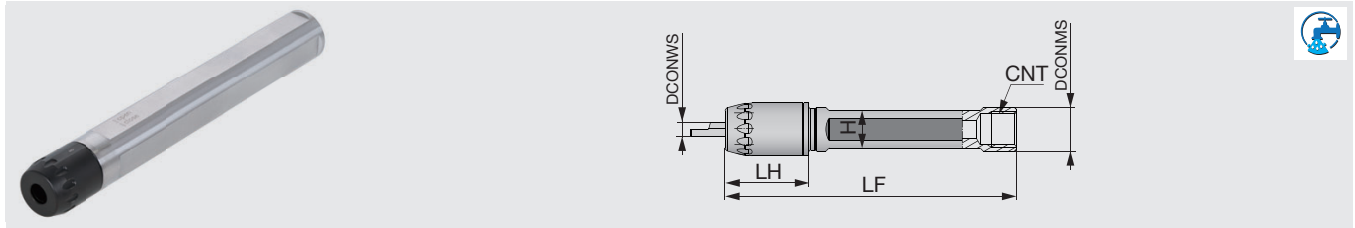
Designation	DCONMS	DCONWS	LF	LH	H	CNT
JBBS12-4-L80C-4N	12	4	80	10	10.3	Rc1/16
JBBS127-4-L80C-4N	12.7	4	80	10	11.6	Rc1/16
JBBS14-4-L80C-4N	14	4	80	10	12	Rc1/8
JBBS159-4-L100C-4N	15.875	4	100	10	14.58	Rc1/8
JBBS159-7-L100C-4N	15.875	7	100	10	14.58	Rc1/8
JBBS16-4-L100C-4N	16	4	100	10	15	Rc1/8
JBBS16-7-L100C-4N	16	7	100	10	15	Rc1/8
JBBS19-4-L100C-4N	19.05	4	100	20	17.2	Rc1/8
JBBS19-7-L100C-4N	19.05	7	100	20	17.2	Rc1/8
JBBS20-4-L100C-4N	20	4	100	20	18	Rc1/8
JBBS20-7-L100C-4N	20	7	100	20	18	Rc1/8
JBBS22-4-L100C-4N	22	4	100	20	20	Rc1/8
JBBS22-7-L100C-4N	22	7	100	20	20	Rc1/8
JBBS25-4-L100C-4N	25	4	100	23	23	Rc1/8
JBBS25-7-L100C-4N	25	7	100	23	23	Rc1/8
JBBS254-4-L100C-4N	25.4	4	100	23	23.4	Rc1/8
JBBS254-7-L100C-4N	25.4	7	100	23	23.4	Rc1/8

SPARE PARTS

Designation	Clamping screw	Wrench
JBBS**-4-L**C-4N	SSHM5-6PF-S	P-2.5
JBBS**-7-L**C-4N	SSHM5-4PF-S	P-2.5

JBBSA-C

Collet chuck sleeve with internal coolant supply - Line up expansion



Designation	DCONMS	DCONWS	LF	LH	H	CNT
JBBSA12-4-L80C	12	4	80	23	10.3	Rc1/8
JBBSA127-4-L80C	12.7	4	80	23	11.6	Rc1/8
JBBSA14-4-L80C	14	4	80	23	12	Rc1/8
JBBSA159-4-L100C	15.875	4	100	23	14	Rc1/8
JBBSA159-7-L100C	15.875	7	100	23	14	Rc1/8
JBBSA16-4-L100C	16	4	100	23	14	Rc1/8
JBBSA16-7-L100C	16	7	100	23	14	Rc1/8
JBBSA19-4-L120C	19.05	4	120	23	17.2	Rc1/8
JBBSA19-7-L120C	19.05	7	120	23	17.2	Rc1/8
JBBSA20-4-L120C	20	4	120	23	18	Rc1/8
JBBSA20-7-L120C	20	7	120	23	18	Rc1/8
JBBSA22-4-L135C	22	4	135	23	20	Rc1/8
JBBSA22-7-L135C	22	7	135	23	20	Rc1/8
JBBSA25-4-L135C	25	4	120	23	23	Rc1/8
JBBSA25-7-L135C	25	7	120	23	23	Rc1/8
JBBSA254-4-L120C	25.4	4	120	23	23.4	Rc1/8
JBBSA254-7-L120C	25.4	7	120	23	23.4	Rc1/8

SPARE PARTS



Designation	Cap	Wrench
JBBSA**-4-L...	CAP-A-4	WRENCH-A-4
JBBSA**-7-L...	CAP-A-7	WRENCH-A-7



www.tungaloy.com

follow us at:
facebook.com/tungaloyjapan
twitter.com/tungaloyjapan
www.youtube.com/tungaloycorporation



AS9100 Certified
 78006
 2015.11.04
 ISO 14001 Certified
 EC97J1123
 1997.11.26

Distributed by:



FIND US ON THE CLOUD!
machingcloud.com

